

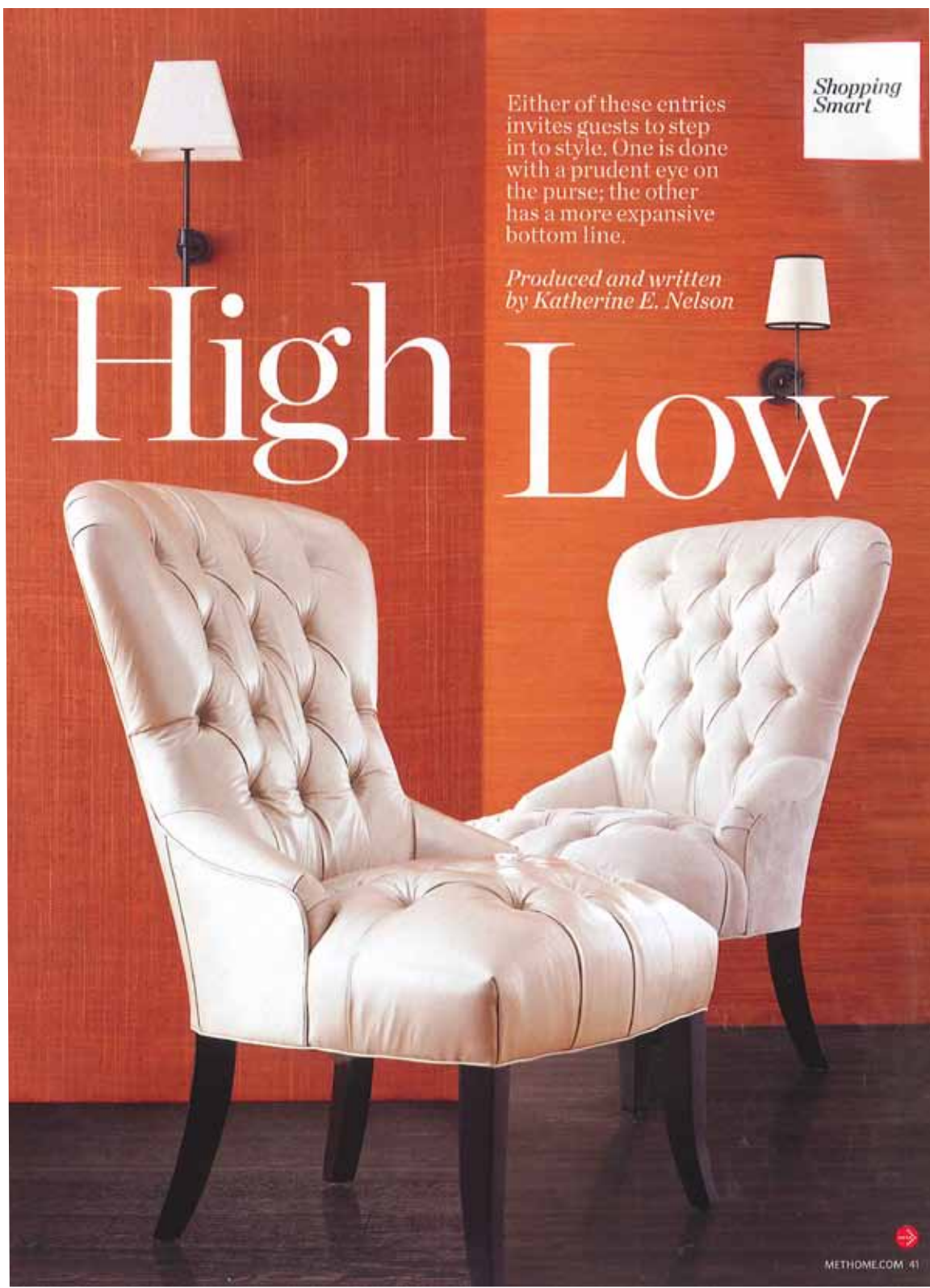


*Shopping
Smart*

Either of these entries invites guests to step in to style. One is done with a prudent eye on the purse; the other has a more expansive bottom line.

*Produced and written
by Katherine E. Nelson*

High Low



METHOME.COM 41

METROPOLITAN HOME
DEC 2009 / MELISSA

THE URBAN ELECTRIC CO.



Shopping Smart
Cont.

High \$14,562

•Bamboo chair \$650 •Pillow fabric \$396/yd. •Console \$1,400 •Mirror \$1,275 •Vase \$2,900 •Monkey \$90 •Obelisk \$120 •Tufted chair \$2,140 •Sconce \$400 •Wall covering \$120/yd. •Flooring \$11/sq. ft. •Rug \$3,000

Pull up a seat in our fashionable HIGH/LOW foyer, the first thing your guests will see when they come to visit. Front and center in our HIGH room (this page), Jonathan Adler's Chippendale faux-bamboo armchair (JonathanAdler.com) feels edgy with its boxy shape and shiny lacquer finish. It's decked out with a Kravet (Kravet.com) pillow in opulent Mirella; a viscose-cotton velvet. At right, in our LOW room, the Macau armchair from Ballard Designs (BallardDesigns.com) has similar dimensions but a more traditional look, with curved corners and a rubbed finish; the Kravet pillow is a cotton-poly woven (#29983-816). Both foyers feature Parsons-style tables. On this page is Saloom's Cityscapes Urban Leg console (Saloom.com), custom crafted in solid maple with a floating, ebony-finished edge; the LOW Crate & Barrel console (opposite; CrateAndBarrel.com) is designed in tubular steel with a floating glass top. Above our HIGH console is Oly's Moon mirror (OlyStudio.com) with its gleaming antiqued finish; opposite is Two's Company's Kaleidoscope wall mirror (Two'sCompany.com) of beveled clear glass. Also greeting guests are impish decorative monkeys. Our HIGH room features a hand-painted porcelain figurine by Mottahedeh (Mottahedeh.com), famed for its historic Chinese export designs; its LOW country cousin, Monkey with Banana Bowl, is ceramic, from Madison Ave. Gifts (MadisonAveGifts.com). The HIGH decorative obelisk from Ethan Allen (18") is EthanAllen.com has an antique silver-leaf finish and architectural trim; its counterpart, Z Gallerie's Mirrored Glass obelisk (ZGallerie.com), is plain glass and two inches shorter. The HIGH Block Turtle vase from Lalique (Lalique.com) is mouth-blown into a mold and hand-finished in black crystal, a labor-intensive process; designed by Dror Benshetrit, the LOW counterpart, Rosenthal's Vase of Phases (opposite; RosenthalUSA.com), has a similarly textured surface, but it's slip-cast in porcelain.



METROPOLITAN HOME
DEC 2009 / MELISSA

THE URBAN ELECTRIC CO.



METROPOLITAN HOME
DEC 2009 / KYOTO

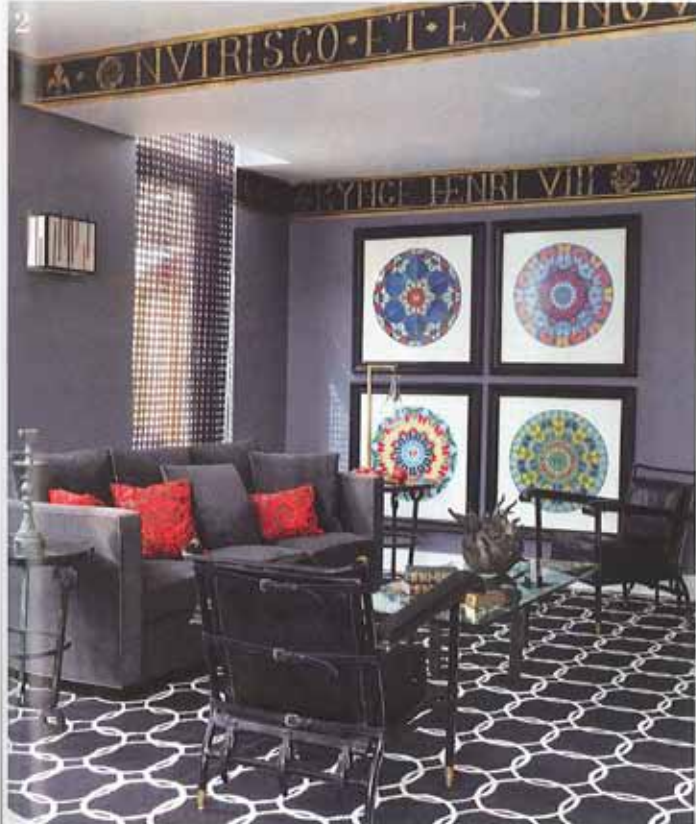
THE URBAN ELECTRIC CO.

THE TUDORS

SMALL STUDY/SITTING ROOM + TERRACE

Designer: Richard Mishaan

In his youth, Henry VIII's athletic physique—not to mention the aphrodisiac spell of his power—could get a woman in the sack faster than you could say “Off with her head!” He was “a womanizer, a fop and incredibly sexual,” says Mishaan. If His Majesty were alive and copulating today, he'd surely be doing it in an elegantly tailored bachelor pad like this. (1) The window-shade fabric “resembles ironwork in a 16th-century castle,” says Mishaan. (2) Butterfly works from Damien Hirst’s “Superstition” series emulate stained glass while alluding to Henry’s occultist leanings. (3) The stenciled borders derive from phrases of veneration inscribed on portraits of the monarch’s wives (whether their veneration remained intact after discovering his infidelities is historically uncertain).



For more information, visit methome.com/showtime2009.

RESOURCES: **Small Study/Sitting Room:** Stark Carpet, sisal carpet, starkcarpet.com; The Shade Store, window treatments, theshadestore.com; Robert Allen/Beacon Hill, window treatment fabric, robertallendesign.com; Maharam, game table chair fabric, sofa fabric and trim, maharam.com; Fireplaces, mantle, fireplace, napoleonfireplaces.com; Hot Concepts, installation, 718.979.8300; The Alpha Workshops, wall painting/finishes, alphaworkshops.org; Richard Mishaan for Bolier, game table, bolierco.com; Calligaris at AKO, game table, akostores.com; Ca Fortary, sofa throw pillows, fortary.com; Crate and Barrel, sofa throw inserts, crateandbarrel.com; Benjamin Moore, paint, benjaminmoore.com; Room Furniture, coffee table, roomonline.com; Homer, side table, homer.com; Natural Curiosities, prints, naturalcuriosities.com; From Richard's p collection, Jacques Adnet side chairs, British Vintage/Mid-Century c artwork; Damien Hirst Superstition series; Fornasetti for Cole & Son backing, cole-and-son.com; Ikea, grandfather clock, ikea.com; Uril Co., pendant light, sconces, urbanelectricco.com; Reinaldo Sangu the Dean Project, crown sculpture, reinaldosanguino.com; Ryo Ti heart sculpture, ryotoyoyonaga.com; Baker, accessories, bakerkalerier.com; Arteriors, accessories, arteriorshome.com; Oly, accessories, olystudi.com; Warner Cable, HD digital cable, time Warnercable.com; Terraces: Moll LTD., outdoor lighted screen, molldesign.com; Richard Mishaan, custom for the Central Park Conservancy, outdoor bench.