



LUXE  
SUMMER 2016  
HARPER

THE URBAN ELECTRIC CO.

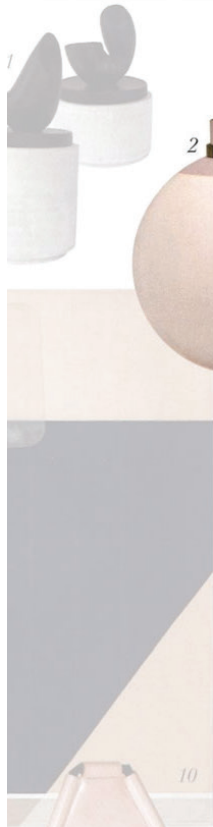
RKET / TREND



# PARADISE FOUND

SALA AYUTTHAYA:  
AYUTTHAYA, THAILAND

Renowned for its opulent temples and lavish sacred spaces, Thailand takes great pride in its legendary history of architecture and design. Located directly across from the Wat Phutthai Sawan temple, built in 1353 A.D. by the first monarch of the area, Sala Ayutthaya was conceived with both its namesake's long architectural past in mind and a focus on reinvented minimalist Thai design. Visionaries Siriyot Chalarnuay and Arisara Chakranon of architectural firm Onion embraced a purist palette and pale pops of serene colors—not unlike Cle Tile's Vintage Rose accents and Louise Gray's Quilt No. 3, shown here—and commissioned local talent to help construct the tranquil refuge in the heart of this storied city.



1. Maquette Jars / Price upon request / [erstudiola.com](http://erstudiola.com)
2. Harper Pendant in Hewn Brass and Paint Selection (Farrow & Ball Calamine #230) with Opal Glass / Price upon request / [urbanelectricco.com](http://urbanelectricco.com)
3. Zellige Tiles in Vintage Rose / Price upon request / [cletile.com](http://cletile.com)
4. Zazou Sunglasses / \$360 / [zanzan.co.uk](http://zanzan.co.uk)
5. Saturnus Disk / \$1,800 / [concretecat.com](http://concretecat.com)
6. Kiki Flat Slide / \$350 / [loefflerandall.com](http://loefflerandall.com)
7. Arcades Avec Bolle Vases / \$550 / [abchome.com](http://abchome.com)
8. Simplex Hydrangea Mirror / Price upon request / [taylorforrest.com](http://taylorforrest.com)
9. Mesa Chair in Nude Leather and Oxidized Steel / Price upon request / [taylorforrest.com](http://taylorforrest.com)
10. Throw Quilt No. 3 / \$410 / [louisegray.com](http://louisegray.com)



SALA AYUTTHAYA PHOTO: CORBIESTY WORKSPACE