



In Colette's private ensuite, she used a dresser-turned-vanity from her London home as a starting point for a look that embraces romance, as evidenced in the deep antique zinc tub, heavily veined marble floor and faucet upstand, and fanciful sconces. **Tub**, Christopher Butterworth Antiques; **wall colour**, Pavilion Gray (242), Farrow & Ball.



Add a touch of charm with a leaf-coral-inspired Coco mirror by Made Goods. 47" h. \$2,970. At South Hill Home.



Dress up rooms with pretty jewelry-like fixtures. Hamilton lantern. 37½" h. \$4,230. Through Urban Electric.



Get the LOOK

OF COLETTE'S LUSH, WHIMSICAL GEORGIAN HOME.

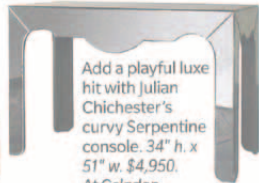
Add interest with arresting silhouettes, like the sophisticated Venetian headboard — especially striking in black metal. 60" h. \$2,700 (queen). At Au Lit Fine Linens.



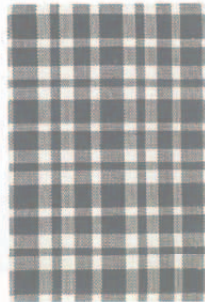
Upholster side chairs in stylized florals. Coral velvet (top), \$296/yd., Kravet; Sohil Crewel (left), \$525/yd., Rhode Island Roses (right) by Mulberry Home, \$248/yd., Lee Jofa.



Coordinate disparate books by wrapping them in paper, or buy prewrapped ones. Books, \$50 to \$85/in.ft. Through Juniper Books.



Add a playful luxe hit with Julian Chichester's curvy Serpentine console. 34" h. x 51" w. \$4,950. At Celadon.



Try a sturdy plaid rug in high-traffic family rooms. Tattersall rug. 9' x 12'. \$564. Through Dash & Albert.



Break up a wood dining set by adding slipcover red chairs at either end of the table. Camelback dining armchair. From \$399. At Restoration Hardware.



HOUSE AND HOME
DECEMBER 2012 / HAMILTON

THE URBAN ELECTRIC CO.